

GENERAC[®]

POWER SYSTEMS, INC.

Owner's Manual

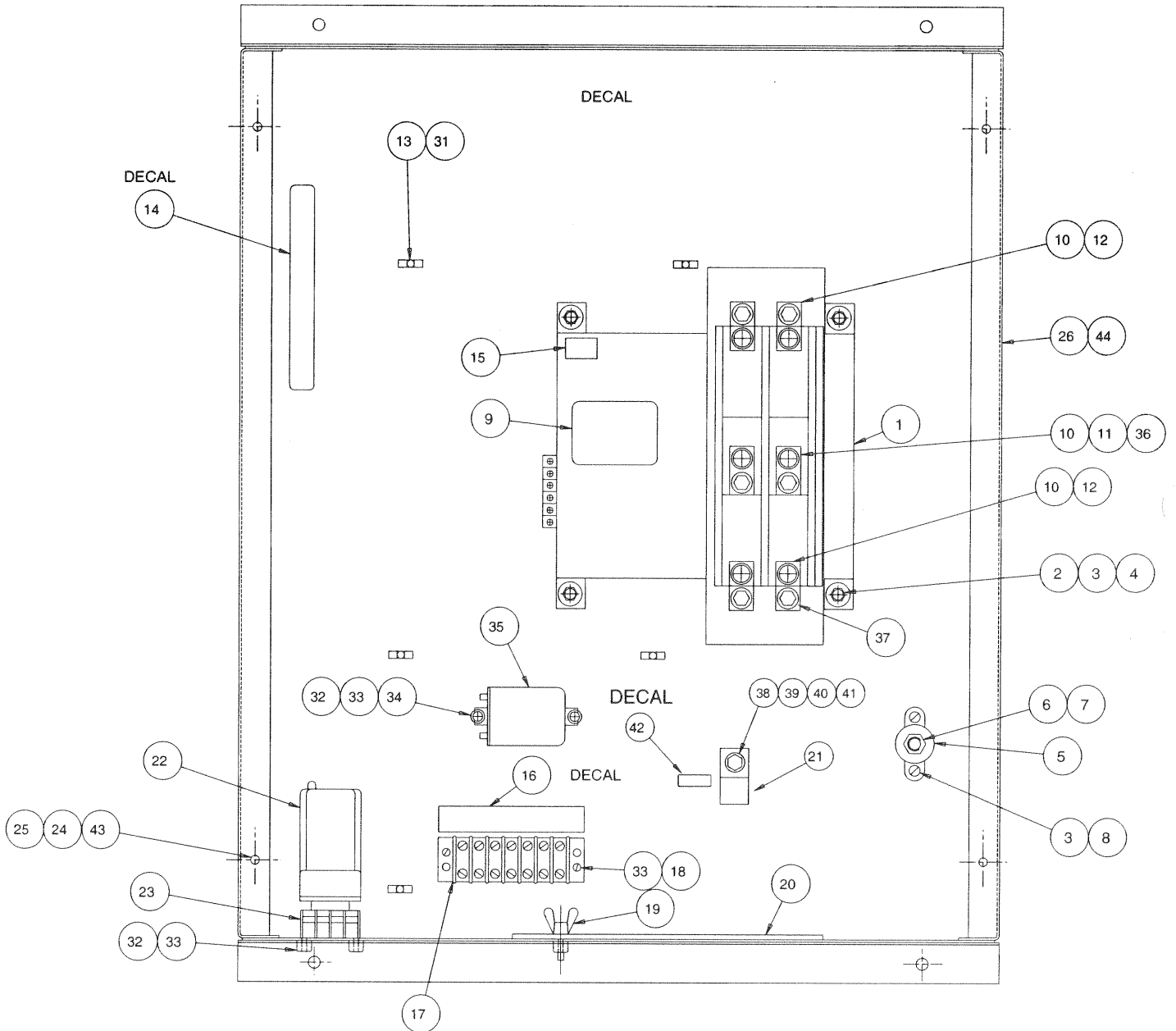
100 and 200 Amp
"V" Type and "Y" Type

Transfer Switch

Models: 09227-0, 09228-0,
09229-0, and 09230-0

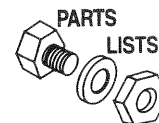
This manual should remain with the unit.

Section 6 – Exploded Views and Parts Lists
Transfer Switch - Drawing No. 078589-H



Section 6 – Exploded Views and Parts Lists

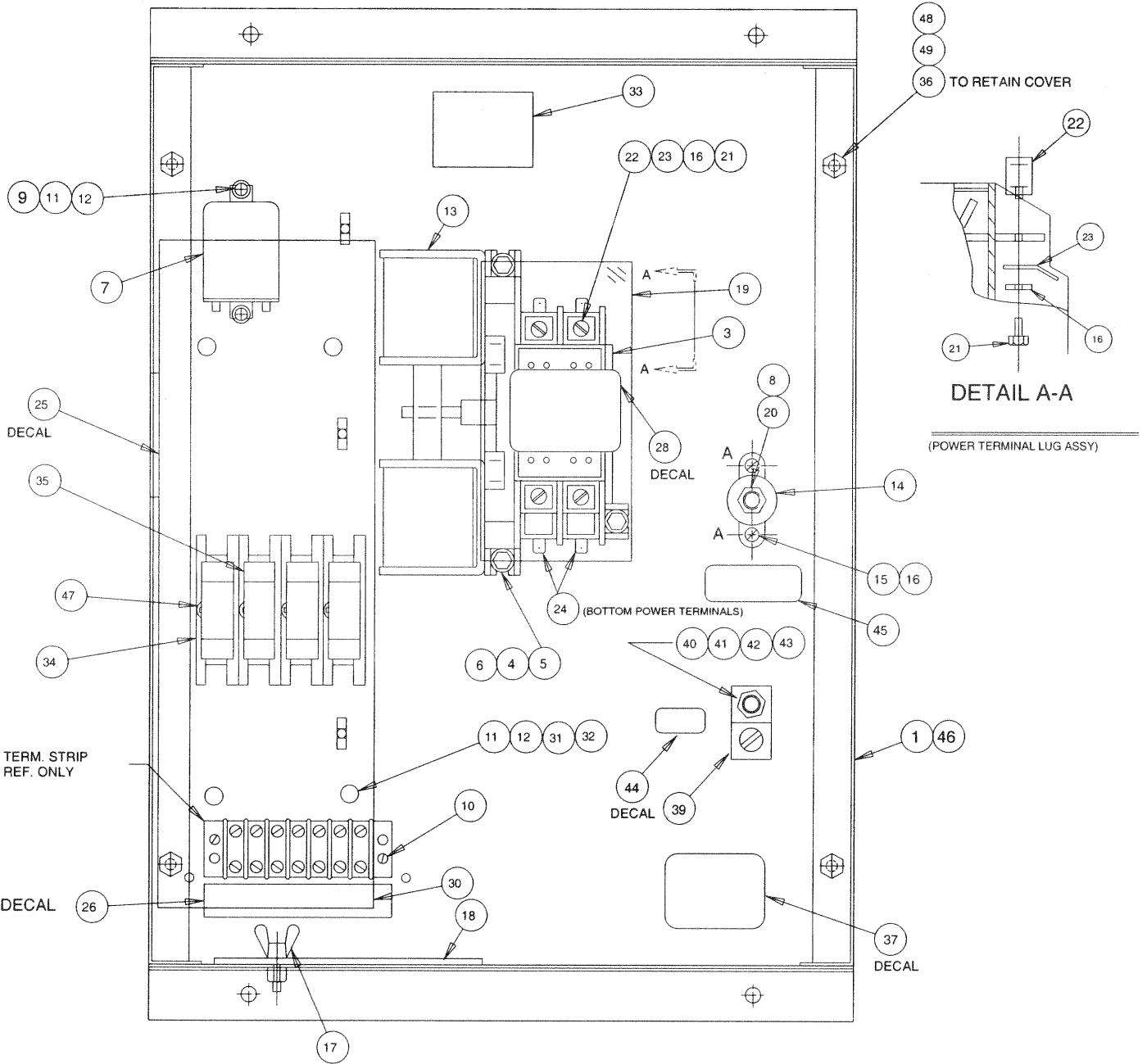
Transfer Switch - Drawing No. 078589-H



ITEM	PART NO.	QTY.	DESCRIPTION
1	62642	1	SWITCH TRANSFER-#79953
	62677	1	SWITCH TRANSFER-#79953-A
	64198	1	SWITCH TRANSFER-#79953-B
2	C2267	4	M5-.8 x 12 SWAGEFORM HHC
3	49226	6	WASHER, LOCK-M5
4	23897	4	WASHER, FLAT-M5
5	57073	1	LUG, NEUTRAL
6	27628	1	NUT, HEX .375-16
7	22131	1	WASHER, LOCK 3/8"
8	C2266	2	M5-.8 x 16 SWAGEFORM PPH
9	79954	1	DECAL, SWITCH RATING-#79953
	79955	1	DECAL, SWITCH RATING #79953-A
	79956	1	DECAL, SWITCH RATING-#79953-B
10	63552	9	DEVICE, ANTI-ROTATION-#79953
11	62684	9	LUG, SOLDERLESS-#79953
12	62704	4	LUG, SOLDERLESS-#79953-A
	62704	6	LUG, SOLDERLESS-#79953-B
13	63378	5	HOLD DOWN, TIE WRAP
14	74991	1	DECAL, MANUAL OPERATIONS
15	75353	1	DECAL, UL COMPONENT RECOGNITION
16	A2595	1	DECAL, TERMINAL STRIP
17	47822	1	STRIP, TERMINAL
18	A1661	2	POP RIVET
19	64113	1	STUD, WING
20	63321	1	HANDLE, TRANSFER SWITCH
21	57329	1	LUG, GROUND
22	63306	1	MONITOR, POWER 3-PHASE
23	61675	1	SOCKET, RELAY OCTAL
24	47411	4	M6-1.0 x 16 HHCS
25	22473	4	M6 FLAT WASHER
26	76063	1	ENCLOSURE
27**	75506	1	COVER, ENCLOSURE
28	79959	1	DECAL, UL INFORMATION
29**	79957	1	ASSEMBLY, WIRE HARNESS-#79953
	79958-A	1	ASSEMBLY, WIRE HARNESS-#79953-A
	79957-A	1	ASSEMBLY, WIRE HARNESS-#79953-B
30**	69254	4	CRIMPTITE
	28739	5	WRAP, TIE
32	C2265	4	M4-.7 x 12 SWAGEFORM PPH
33	22264	4	WASHER, LOCK-M4
34	22985	2	WASHER, FLAT-M4
35	63617	1	RELAY, 12VDC 10A.
36	62702	2	LUG, SOLDERLESS-#79953-A
	62702	3	LUG, SOLDERLESS-#79953-B
37	26902	-	TAPTITE, #8 x 1/4"-#79953
	26902	6	TAPTITE, #8 x 1/4"-#79953-A
	26902	7	TAPTITE, #8 x 1/4"-#79953-B
38	22142	1	5/16" x 3/4" HHCS
39	27482	1	5/16" SHAKEPROOF WASHER
40	22129	1	5/16" LOCK WASHER
41	22259	1	5/16"-18 HEX NUT
42	67210A	1	DECAL, GROUND
43	22097	4	M6 LOCK WASHER
44	75506	1	COVER

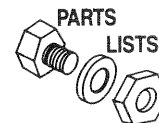


Section 6 – Exploded Views and Parts Lists
Transfer Switch - Drawing No. 078589-H



Section 6 — Exploded Views and Parts Lists

Transfer Switch - Drawing No. 078589-H



ITEM	PART NO.	QTY.	DESCRIPTION
1	79849	1	ENCLOSURE
2*	74975	1	COVER, ENCLOSURE
3	71340	1	SWITCH, TRANSFER 100A. 2-POLE
4	C2267	4	M5-.8 x 12 SWAGEFORM HHC
5	49226	4	M5 LOCK WASHER
6	51713	4	M5 FLAT WASHER
7	63617	1	RELAY, 12V. DC 10A.
8	27628	1	NUT, .375-16
9	C2265	2	M4-.7 x 12 SWAGEFORM PPH
10	A1661	2	POP RIVET
11	22264	6	#8 LOCK WASHER
12	38150	6	#8 FLAT WASHER
13**	75353	1	DECAL, UL COMPONENT RECOGNITION
14	57073	1	LUG, NEUTRAL
15	C2266	2	M5-.8 x 16 SWAGEFORM PPH
16	22152	8	WASHER, LOCK #10
17	64113	1	STUD, WING
18	77441	-	HANDLE, TRANSFER SWITCH
19	77440	1	COVER, POWER TERMINAL
20	22131	1	WASHER, FLAT .375 NOM.
21	36932	6	PPHMS 10-32 x 1/4"
22	77033	6	LUG, SOLDERLESS
23	74138	2	MALE DISCONNECT ADAPTOR (BENT)
24	77052	2	MALE DISCONNECT ADAPTOR
25**	77029	1	DECAL, MANUAL OPERATIONS
26	A2595	1	DECAL, TERMINAL STRIP
27*	81238	1	HARNESS, WIRE
28**	77032	1	DECAL, TRANSFER SWITCH RATING
29**	77036	1	DECAL, UL INFORMATION
30	79840	1	COVER, RELAY & TERM. BLOCK
31	79846	4	STANDOFF HEX S/S
32	22471	4	HEX NUT #8-32
33	81221	1	DECAL, NAME PLATE UL
34	73591	4	FUSE HOLDER
35	73590	4	FUSE 2A. 600V.
36	47411	4	M6-1.0 x 16 HHCS
37	83736	1	DECAL, CSA
38	95282	1	DECAL, LIVE CIRCUIT WARNING
39	62684	1	LUG, GROUND
40	22142	1	5/16"-18 x 3/4" HHCS
41	27482	1	5/16" SHAKEPROOF WASHER
42	22129	1	5/16" LOCK WASHER
43	22259	1	5/16"-18 HEX NUT
44	67210A	1	DECAL, GROUND
45	A9457	1	DECAL, NEUTRAL
46	74975	1	COVER
47	C2212	4	M4-.7 x 16 SWAGEFORM PPH
48	22473	4	M6 FLAT WASHER
49	22097	4	M6 LOCK WASHER